



1-1 Accessory

1 Meter X 1	2 Main wiring X 1	3 RPM wire (Type A) X 1	4 RPM wire (Type B) X 1
5 Temp sensor wire X 2	6 PT1/8 water temp sensor X 2	7 Digital speed signal sensor X 1	8 D6 X 5L mm magnet X 6
9 Connect terminal X 11	10 M8 / S type speed sensor bracket X 1	11 M10 / S type speed sensor bracket X 1	12 M5 X 5L hexagonal bolt X 2
13 2.5 mm spanner X 1	14 3 mm spanner X 1	15 Meter bracket X 1	16 M5 screw X 3
17 M5 gasket X 3	18 M6 X 35L screw X 2	19 M8 X 30L screw X 2	20 M6 screw X 2
21 M8 screw X 2	22 M6 gasket X 2	23 M8 gasket X 2	24 Manual X 2

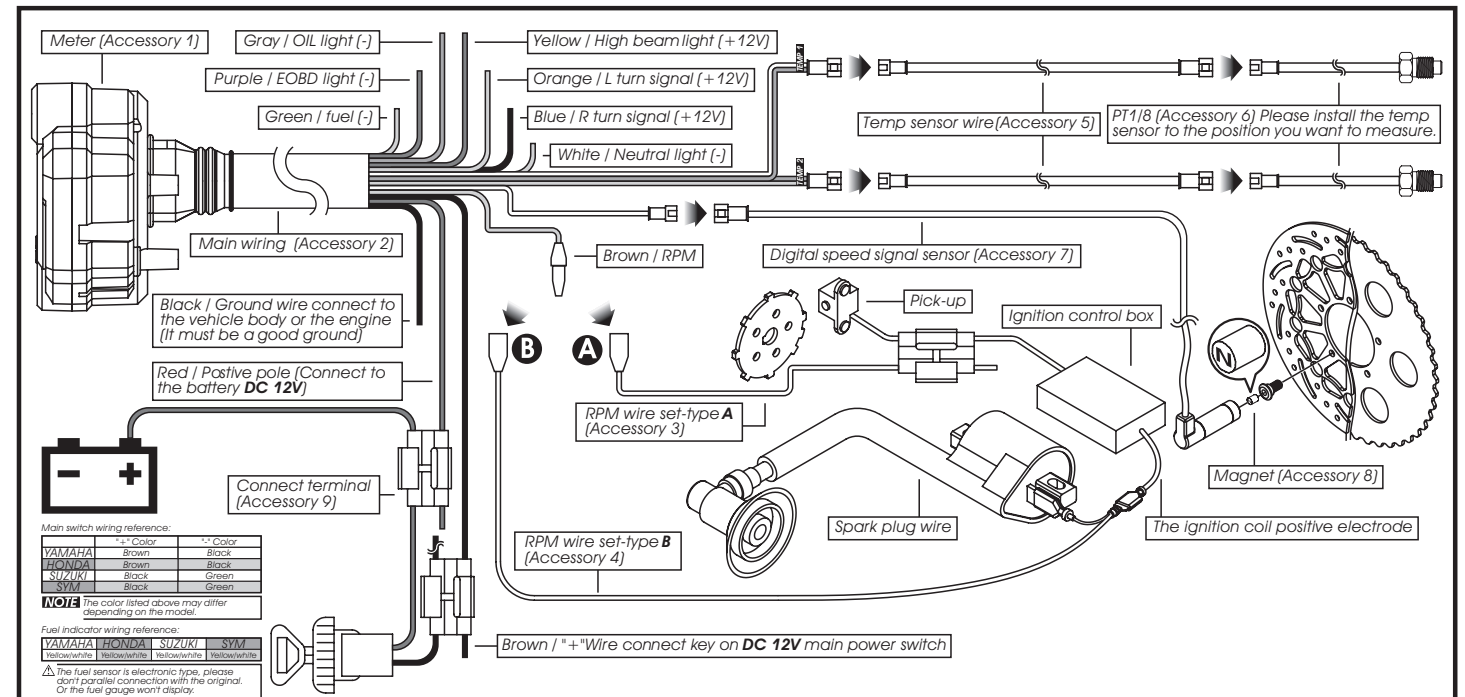
NOTE Please contact the local distributor if the items you open are not the same, with the above-listed one.

1-2 Option accessory

1 Disc magnet screw 5/16-18 X 22.1L M5 X P0.8 X 12L M6 X P1.0 X 12.6L M6 X P1.0 X 19.7L M6 X P1.0 X 24L M8 X P1.25 X 22.5L M8 X P1.25 X 27.5L M8 X P1.25 X 29L M10 X P1.25 X 28.3L	2 Active speed sensor	3 Digital speed signal sensor JIS TYPE α	4 Digital speed signal sensor JIS TYPE A
5 Digital speed signal sensor RUNNER	6 Digital speed signal sensor SR X-FIGHT BOOSTER	7 L type speed sensor bracket	8 Oil temp sensor adapter M12 X P1.5 X 15L M14 X P1.25 X 15L M14 X P1.5 X 15L M16 X P1.5 X 15L M18 X P1.5 X 15L M20 X P1.0 X 15L M20 X P1.5 X 15L
9 Water temp sensor adapter M14 M16.M18 M22.M26 mm	10 Cylinder head temp sensor M10. M14 mm	11 Temp sensor M10 X P1.0 M12 X P1.5 M14 X P1.25 M14 X P1.5 M16 X P1.5 / M18 X P1.5	12 Temp sensor wire set (2 M)

NOTE Some of the option accessories may not sell. For the details, please contact the local distributor.

2-1 Wiring installation instructions



⚠ The north (N) side of magnet must face to the sensor when installing.

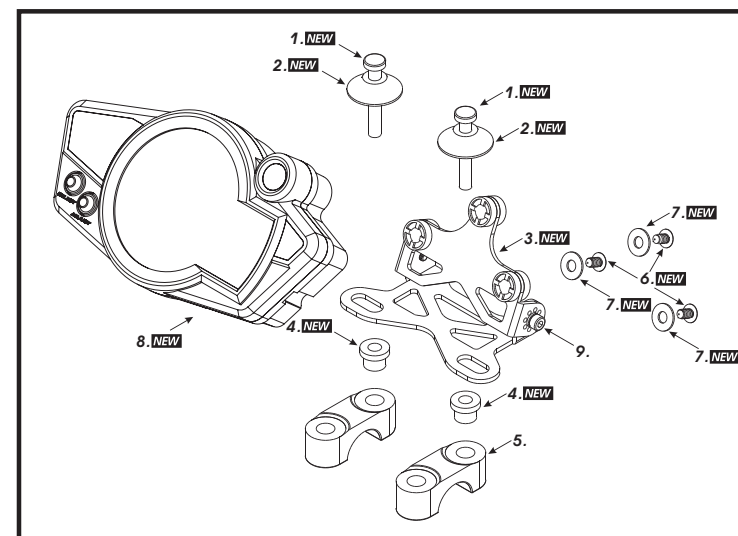
NOTE If you don't connect the fuel wiring, the fuel gauge will not display.

NOTE When connecting the power wiring, please follow the instruction. If you connect the red & brown wiring in parallel will cause the meter work improperly.

⚠ We provide 2 ways to get the RPM signal-sensor A & sensor B. If there are interruptions, you could change the sensor wiring to get better signal.

CAUTION! We also suggest to replace your spark plug by a type R spark plug to get a better signal. For the model more than one piston, please catch the signal from the first cylinder coil wire. For the model with more than one piston, please just connect the RPM sensor wiring to one of the ignition coil positive electrodes.
※Please make sure that the ignition coil positive electrode before connecting the RPM sensor wiring! Wrong installation will cause the meter broken!
※If the original meter comes with the tachometer, we will suggest you to connect the RPM wire to the original RPM signal wire to get the best signal.

2-2 Installation instructions



When installing, please follow the process

1. M6 or M8 screw X 2 (Accessory 18, 19)
2. M6 or M8 aluminum screw bush X 2 (Accessory 20, 21)
3. Bracket (Accessory 15)
4. M6 or M8 gasket X 2 (Accessory 22, 23)
5. Handle bar bracket

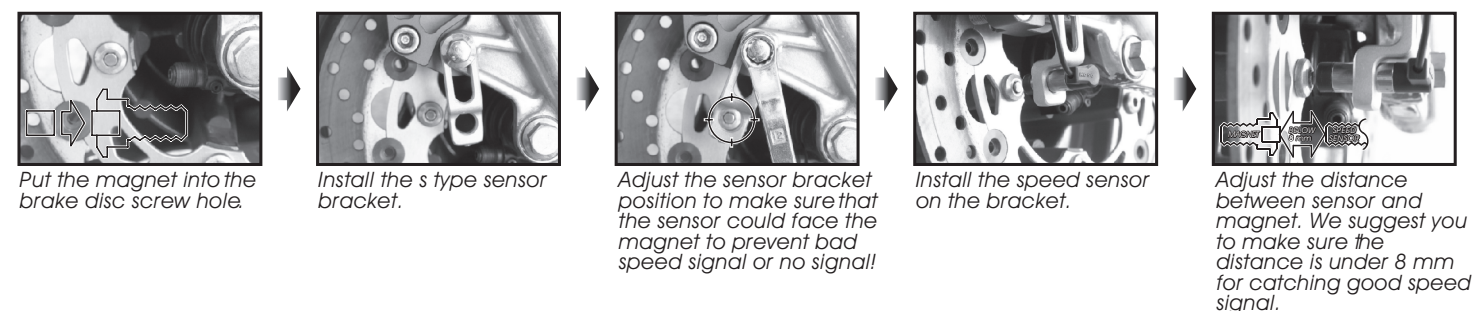
NOTE You could also install it (meter bracket) on the original meter bracket.

6. M4 screw X 3 (Accessory 16)
7. M4 gasket X 3 (Accessory 17)
8. Meter (Accessory 1)
9. Meter bracket micro-adjustment screw

NOTE You could choose the angle first and then use the screw to fix the angle.

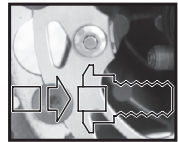
NOTE The handle bar bracket screw and screw hole will differ depending on different model. We suggest you to use the additional assembly (item 1.2.4) to fit it.

MOTO / SCOOTER S type speed sensor bracket instruction

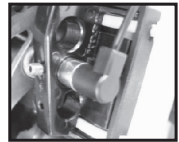


MOTO / SCOOTER L type speed sensor bracket instruction

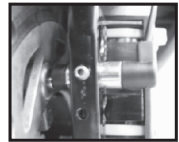
ATV S type speed sensor bracket instruction



Put the magnet into the brake disc screw hole.



Use the bind & the non-slip rubber to fix bracket to the front of the shock and adjust the proper height and angle.

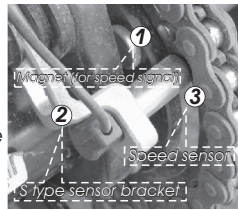


Speed sensor installation find a proper hole to put the sensor in and fix it by hexagonal bolt.



Please keep the distance between sensor and magnet in 8 mm to avoid bad signal.

1. Insert the signal magnet. (You need to dig a hole by yourself).
2. Install the s-type sensor bracket, you could adjust the proper distance and angle to fit different model.
3. After installing the sensor, please adjust the distance between sensor and magnet. Please keep the distance in 8 mm.



NOTE About the setting, please refer to **4-7** tire circumference and sensor point setting.



The more magnet sensor points are, the less the display interval is. when installing the magnet, please put the magnet with **N**-mark side face the outside and put them averagely to avoid wrong signal.

- EX. 1: If your disk has 3 screws, you could install 1 or 3 magnets to catch the speed.
- EX. 2: If your disk has 4 screws, you could install 1 - 2 or 4 magnets to catch the speed.
- EX. 3: If your disk has 5 screws, you could install 1 or 5 magnets to catch the speed.
- EX. 4: If your disk has 6 screws, you could install 1 - 2 - 3 or 6 magnets to catch the speed.

After finishing the magnet installation and sensor point setting, please move your tire to test the speedometer work or not.

